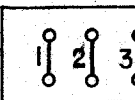
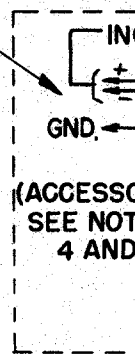


NO	NOTES													
1.	<p>COLOR CODE:</p> <table border="0"> <tr> <td>BK - BLACK</td> <td>BL - BLUE</td> </tr> <tr> <td>W - WHITE</td> <td>Y - YELLOW</td> </tr> <tr> <td>R - RED</td> <td>BR - BROWN</td> </tr> <tr> <td>G - GREEN</td> <td>P - PURPLE</td> </tr> <tr> <td>O - ORANGE</td> <td>S - SLATE</td> </tr> </table>	BK - BLACK	BL - BLUE	W - WHITE	Y - YELLOW	R - RED	BR - BROWN	G - GREEN	P - PURPLE	O - ORANGE	S - SLATE			
BK - BLACK	BL - BLUE													
W - WHITE	Y - YELLOW													
R - RED	BR - BROWN													
G - GREEN	P - PURPLE													
O - ORANGE	S - SLATE													
2.	<p>—X DENOTES SPLICED, SOLDERED, AND TAPED WIRES.</p>													
3.	<p>COMPONENTS SHOWN DOTTED ARE ACCESSORIES TO CABINET.</p>													
4.	<p>USE POWER AND SIGNAL LINE INTERFERENCE SUPPRESSORS FOR INSTALLATIONS REQUIRING MINIMUM R.F. INTERFERENCE. FOR OTHER INSTALLATIONS, OMIT SUPPRESSORS AND CONNECT INPUTS DIRECTLY TO TERMINALS SHOWN.</p>													
5.	<p>CABINET POWER CIRCUIT WIRED FOR 115 V. D.C. OPERATION. CONNECT GROUNDED SIDE OF INPUT POWER, OR NEGATIVE SIDE OF UNGROUNDED POWER TO TERMINAL C40 OR THROUGH THIS SIDE OF FILTER. POLARITIES SHOWN (+) AND (-) ARE FOR NEGATIVE GROUNDED POWER. THE ASSOCIATED ELECTRICAL SERVICE UNIT MUST BE WIRED FOR D.C. OPERATION</p> <p>SELECT THE DESIRED OPERATING CONDITIONS FROM THE FOLLOWING TABLE AND MAKE CONNECTIONS AT THE CABINET TERMINAL BLOCKS WITH THE TWO 153483 STRAPS FURNISHED WITH THE 152624 A.C. TO D.C. ASSEMBLY :</p> <p style="text-align: center;">SIGNAL LINE CIRCUIT ACCESSORY OPERATION.</p> <table border="1" data-bbox="289 1388 964 1598"> <thead> <tr> <th></th> <th>OPERATES CONTINUOUSLY</th> <th>OPERATES WITH POWER SWITCH</th> <th>OPERATES WITH MOTOR CONTROL</th> </tr> </thead> <tbody> <tr> <td rowspan="2">POWER SOURCE</td> <td>NEGATIVE GROUND OR UNGROUNDED</td> <td>C 21 - C 38 C 22 - C 40</td> <td>C 21 - C 35 C 22 - C 40</td> <td>C 21 - C 37 C 22 - C 40</td> </tr> <tr> <td>POSITIVE GROUND</td> <td>C 22 - C 38 C 21 - C 40</td> <td>C 22 - C 35 C 21 - C 40</td> <td>C 22 - C 37 C 21 - C 40</td> </tr> </tbody> </table> <p>SEE APPROPRIATE ELECTRICAL SERVICE UNIT SCHEMATIC WIRING DIAGRAM.</p>		OPERATES CONTINUOUSLY	OPERATES WITH POWER SWITCH	OPERATES WITH MOTOR CONTROL	POWER SOURCE	NEGATIVE GROUND OR UNGROUNDED	C 21 - C 38 C 22 - C 40	C 21 - C 35 C 22 - C 40	C 21 - C 37 C 22 - C 40	POSITIVE GROUND	C 22 - C 38 C 21 - C 40	C 22 - C 35 C 21 - C 40	C 22 - C 37 C 21 - C 40
	OPERATES CONTINUOUSLY	OPERATES WITH POWER SWITCH	OPERATES WITH MOTOR CONTROL											
POWER SOURCE	NEGATIVE GROUND OR UNGROUNDED	C 21 - C 38 C 22 - C 40	C 21 - C 35 C 22 - C 40	C 21 - C 37 C 22 - C 40										
	POSITIVE GROUND	C 22 - C 38 C 21 - C 40	C 22 - C 35 C 21 - C 40	C 22 - C 37 C 21 - C 40										
6.	<p>NECESSARY STRAP CONNECTIONS AT THE CABINET TERMINAL BLOCKS ARE SHOWN ON THE ASSOCIATED ELECTRICAL SERVICE UNIT WIRING DIAGRAM. SEE THE LESU7 ACCESSORY GROUP B.M. FOR THE DIAGRAM NUMBER.</p>													

NO.	NOTES			
7.	ACCESSORY GROUP			
	ACCESS. GROUP NO.	COPYLIGHT SYSTEM	MARGIN IND. LAMP	SI
	130, 137, 150	X	X	
	148, 149, 194, 195	X	X	

(CORDS AND GROUND STRAP FURNISHED BY CUSTOMER)

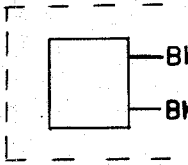


NOTES

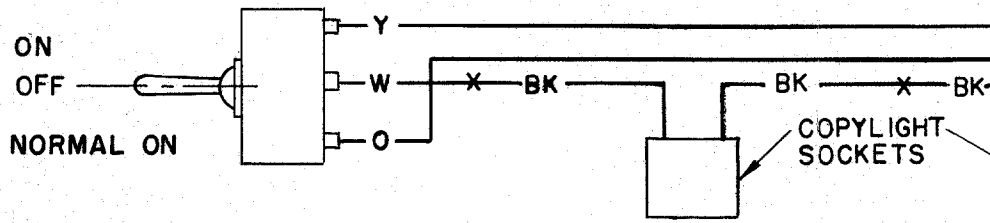
ACCESSORY GROUP ASSIGNMENTS

HT	MARGIN IND. LAMP	SIGNAL BELL	ELEC. NOISE SUPPRESSORS		
	X	X			
	X	X	X		

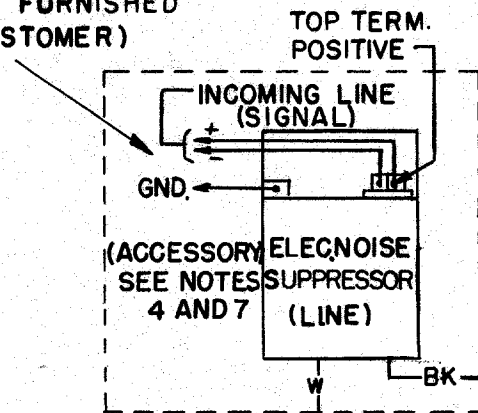
MARGIN INDICATOR LAMP SOCKET SEE NOTE 7



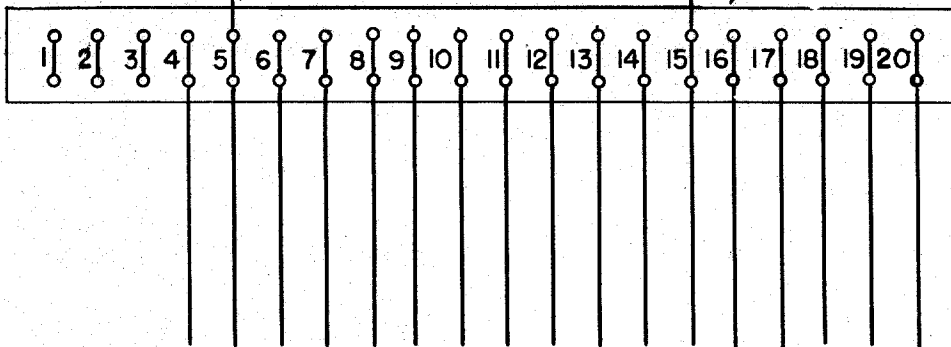
COPYLIGHTING SYSTEM SEE NOTE 7



AND GROUND FURNISHED BY CUSTOMER)

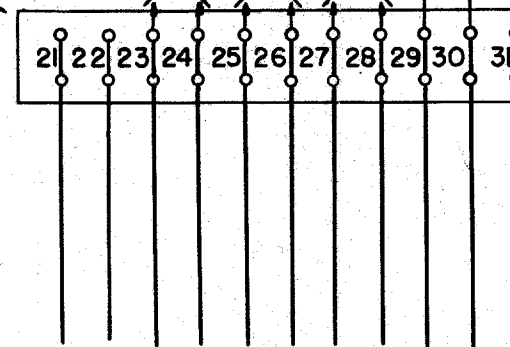


CABINET TERMINAL BLOCKS



CORDS FURNISHED BY CUSTOMER

REPERFORATOR CONTROL
REMOTE - OFF LINE STUNT SHIFT



(CORDS AND GROUND STRAP FURNISHED BY CUSTOMER)

SIGNAL BELL SEE NOTE 7



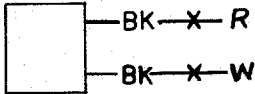
SEE APPROPRIATE ELECTRICAL SERVICE UNIT WIRING DIAGRAM
(AS INDICATED ON THE LESU7 ACCESSORY GROUP B.M.)

FOR SCHEMAT

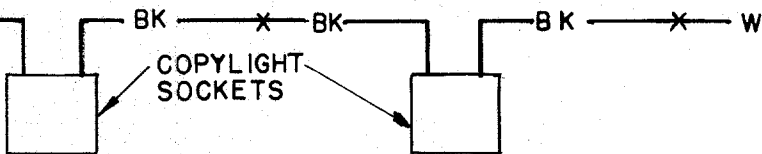
REVISIONS

A	1-14-55	28-4814
B	1-22-55	28-4921
C	1-25-55	28-4869
D	7-8-55	28-5583
E	8-13-55	28-5607
F	7-13-56	28-6816

MARGIN INDICATOR
LAMP SOCKET
SEE NOTE 7



LIGHTING SYSTEM SEE NOTE 7



TOP TERM.

(CORDS AND GROUND STRAP FURNISHED BY CUSTOMER)

SIGNAL BELL
SEE NOTE 7

(ACCESSORY)
SEE NOTES 4 AND 7

INCOMING POWER
(-) (NOTE 5)

GND (+)

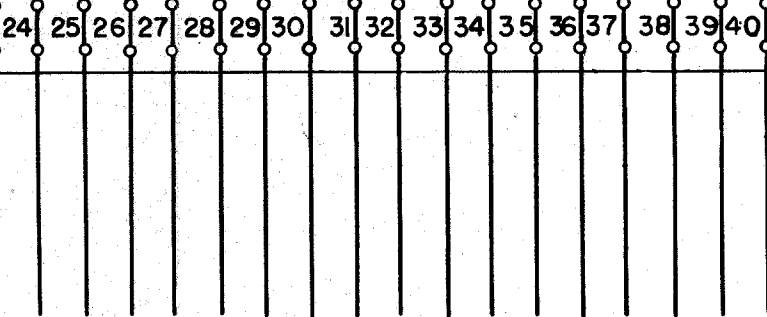
ELEC. NOISE SUPPRESSOR
(POWER)

(+) BK W (-)

GROUND

PERFORATOR CONTROL

BK BK



2876 WD

4-20-54

ACTUAL
WIRING DIAGRAM
FOR MODEL 28
PRINTER CABINET
LAG 203, 204, 205

ACCESSORY GROUPS
130, 137, 148, 149, 150
194, 195

DRAWN: N.K.G. APPROVED

ENGR'D: G.A.O.

CHECKED: *GA*

FILE: 2-30.65.156A

TELETYPE CORPORATION

WIRING DIAGRAM

(B.M.)

FOR SCHEMATIC SEE ASSOCIATED LESU WD.